

# G2 FOOTSWITCH UPGRADE MANUAL

## CONTENTS

1. Installation Guide
2. Reassembling your G2
3. Warranty

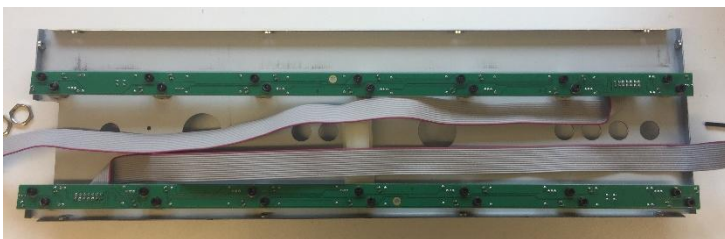
## 1. Installation Guide

### Disassembly & Footswitch Rail Replacement

1. Remove the Hex Bolts:  
Using a 2.5mm Hex/Allen key or bit, unscrew all of the black hex bolts on G2. This will release the Top Board, Back Board, and Front Edge Plate.
2. Remove the Old Footswitch Rails:  
To replace the footswitch rails, begin by unscrewing the nuts from each individual footswitch. Once the nuts are removed, slide the old rails out from the circuit board and the metal plate beneath.
3. Install the New Optokick Switches:  
When installing the new Optokick switches, ensure the cables are securely seated in their sockets. Fold the rail cables as shown in the diagram to maintain proper routing.
4. Position the New Rails:
  - o Place the new top and bottom rails through the holes in the metal top plate.
  - o The ribbon cable connector should be positioned between loops 8 & 9 for the top row of switches, and between loops 6 & 7 for the bottom row.

#### **Important:**

Make sure the rails are positioned correctly. If not, the footswitches will operate in the wrong order.



This makes it clear while highlighting the need for careful handling. Let me know if you'd like any further adjustments!



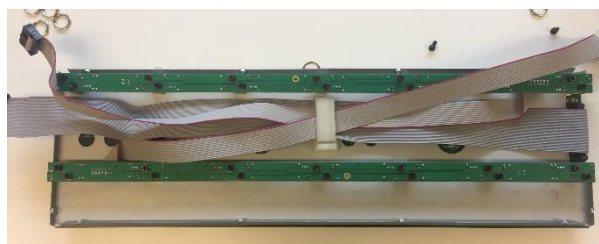
## Reassemble the Top Board:

- Place the top board carefully on top of the footswitches and spacers.
- Replace the washer and nut on each footswitch.
- Note: Some of the holes may be tight, so you may need to apply gentle pressure to push the footswitches through the holes.
- Tighten the nuts securely to ensure everything is firmly in place.

## Secure the Rail Cables:

Clip all rail cables into the provided clip on the metal frame.

Note: Older models may not include the clip on the frame, so please check if it's present



Connect the Rail Cables:

- The rail cable for Footswitches 1–7 should clip into the bottom rail cable slot on the motherboard (circled in yellow).
- The rail cable for Footswitches 8–14 should clip into the top rail cable slot on the motherboard (circled in red).

📌 Attach the Top Board Cable:

- Clip the top board cable into the designated slot on the motherboard (circled in blue).



## 2. Reassembling your G2

Please Note:

These footswitches are compatible with all G2 models. However, depending on your backboard version, there may be minimal space between the backboard circuit and the new OptoKick Rail.

To prevent any pins from touching, we recommend using a small pair of snips to trim or clip any long points from the backboard's ribbon cable socket (as circled below).

## Reattach the Backboard:

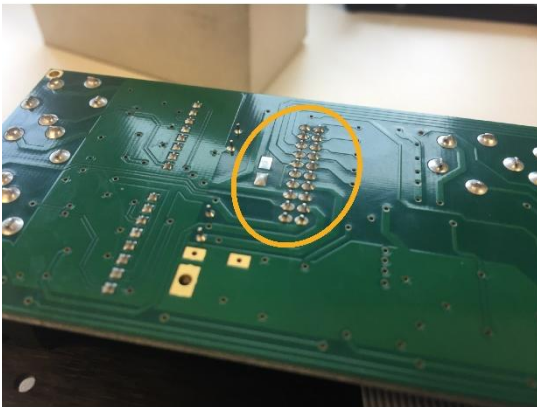
- Begin by reattaching the backboard to the base of the G2 using the hex bolts.
- Ensure that all ribbon cables, especially the Motherboard to Backboard cable, are kept clear of the back plate. Trapping the cables can cause damage and affect the operation of the G2.

## Reattach the Front Plate:

- Next, reattach the front plate to the G2 Top board using the hex bolts.

## Final Assembly:

- Carefully align the two sections of the G2 together.
- Replace the remaining hex bolts and tighten them securely to complete the reassembly.



### 3. WARRANTY

The GigRig warrants the product to be free from defects in material and workmanship for a period of 2 years from the original date of purchase.

If the product fails within the warranty period, The GigRig will repair or, at our discretion, replace the product and cover the cost of return shipping to the original purchaser. This warranty covers defects in manufacturing discovered while using this product as recommended by The GigRig. This warranty does not cover loss or theft, nor does the coverage extend to damage caused by misuse, abuse, unauthorized modification, improper storage, lightning, or natural disasters.

Damage caused by any of the above circumstances may result in a non-warranty repair fee. Legal: In the case of malfunction, the purchaser's sole recourse shall be repair or replacement, as described in the preceding paragraphs. The GigRig will not be held liable to any party for damages that result from the failure of this product. Damages excluded include, but are not limited to, the following: lost profits, lost savings, damage to other equipment, and incidental or consequential damages arising from the use, or inability to use this product.

In no event will The GigRig be liable for more than the amount of the purchase price, not to exceed the current retail price of the product. The GigRig disclaims any other warranties, express or implied. By using the product, the user accepts all terms herein.

**Disposal:** TheGigRig contains no batteries or Lead. Return the unit to TheGigRig Ltd for disposal or use standard disposal for electrical equipment recommended in your country. Do not dispose of electrical equipment in household waste!

TheGigRig is protected by copyright, moral rights, patent and design registration.

The GigRig and its Power supply are RoHS compliant.

Tested and compliant to EN 60950 safety standard.

The power supply is approved to all USA and European

Regulations including UL. See separate instructions supplied with the power supply

Manufacturer: The GigRig Ltd, Unit 15 Whitehill Industrial Pk, Royal Wootton Bassett, SN4 7DB

Authorised Representative: EAS - Mustamäe tee 50, 10621 Tallinn, Estonia

Warning: For indoor use only. Keep away from water. Keep away from Children.

